

Technische Daten

Ausgangsleistung

Nennleistung 2x20 W (an 8 Ω)
Musikleistung 2x35 W (an 8 Ω).

Eingangsempfindlichkeit

Phono 2,5 mV/47 kΩ
Tuner, Aux/CD, TB/Tape 150 mV/47 kΩ

Frequenzgang

20 Hz-20 kHz

Variation der Klangsteller

Bässe ± 8 dB bei 100 Hz
Höhen ± 8 dB bei 10 kHz

Specification

Continuous power output: 20Wx2 (into 8 ohm)

Music power output: 35Wx2 (into 8 ohm)

Input sensitivity and impedance:

Phono inputs 2.5 mV/47 kohm
TUNER. AUX/CD TB/TAPE inputs 150 mV/47 kohm

Frequency response:

20 Hz-20 kHz

Tone control ranges:

Bass ± 8 dB at 100Hz
Treble ± 8 dB at 10 kHz

Ruhestromeinstellung der Endstufe

Für diese Einstellung muß das Gerät mindestens 3 Minuten in Betrieb sein.

Linker Kanal: An R 723 und R 722
1–2 mV mit R 703 einstellen

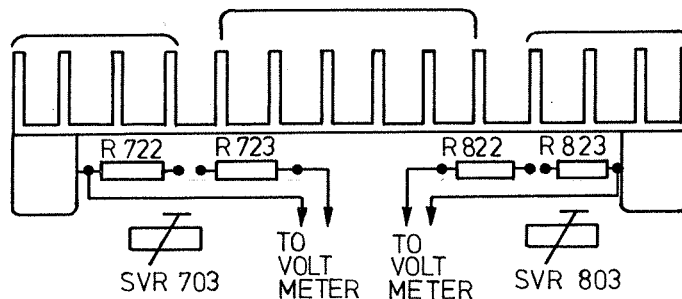
Rechter Kanal: An R 823 und R 822
1–2 mV mit R 803 einstellen.

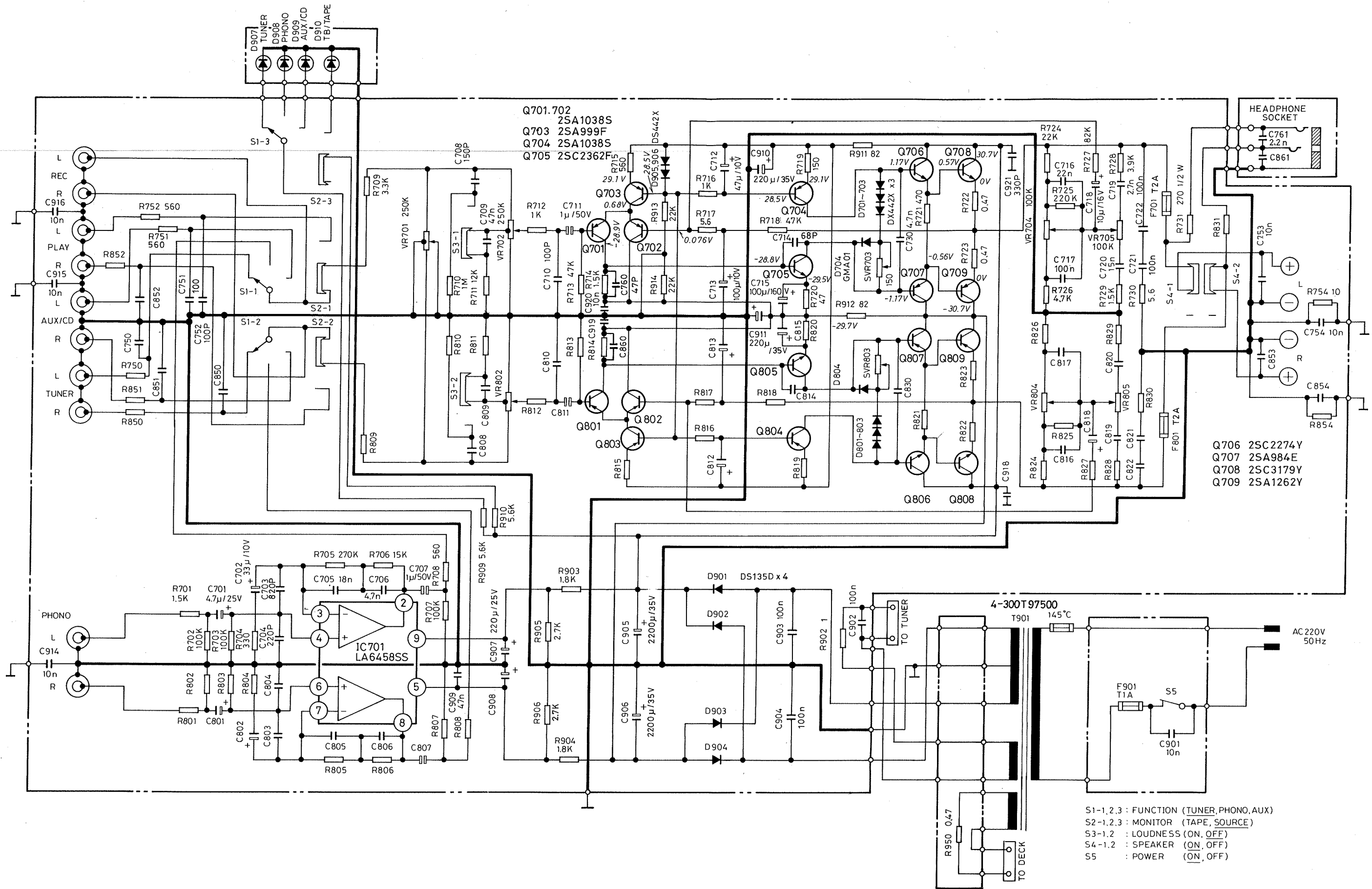
Adjusting Quiescent Current of Output Stage

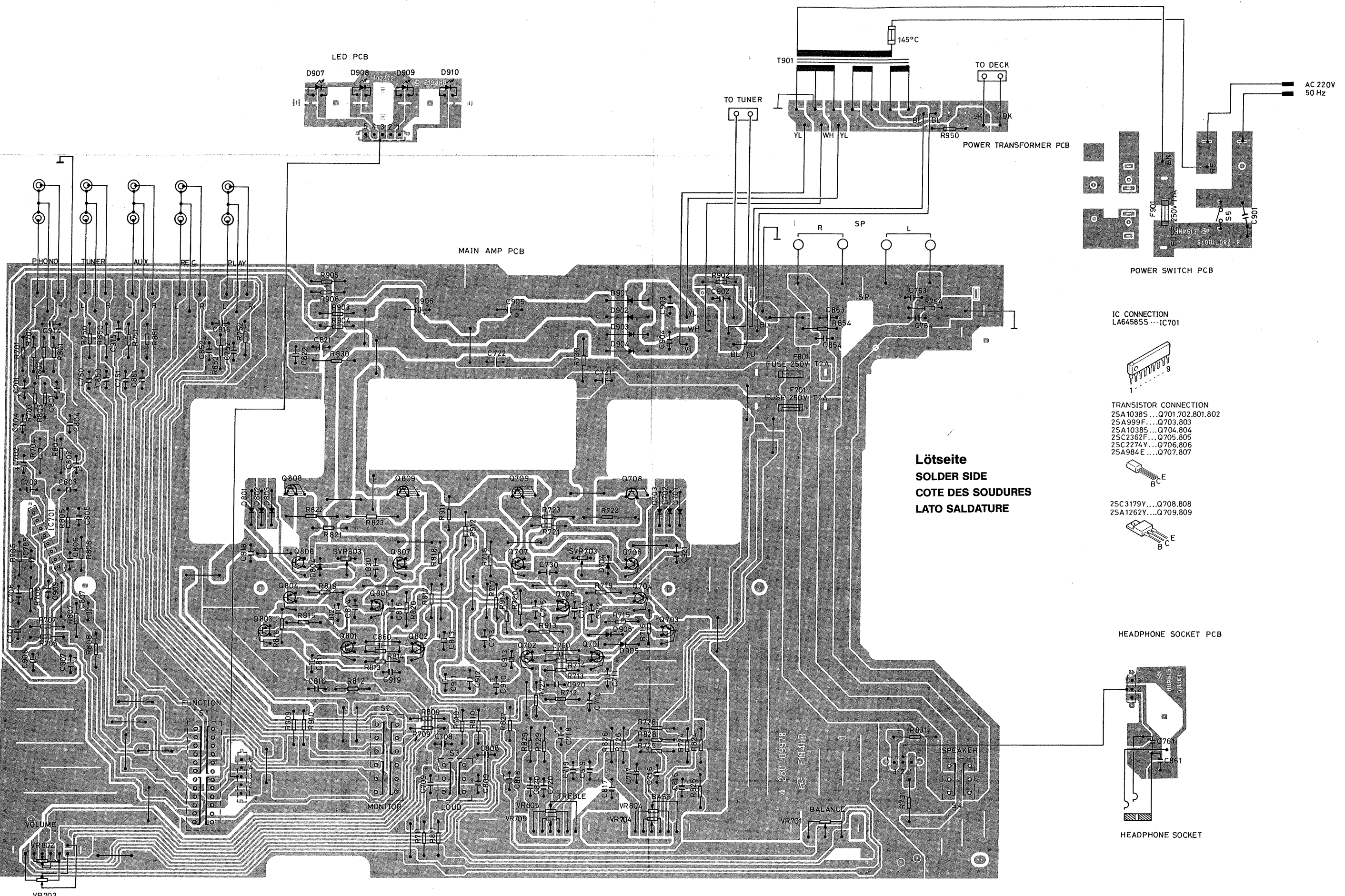
After the power switch is turned on at 3 minutes, adjust SVR 703 and SVR 803 respectively as follows.

L-Channel: SVR 703 for 1.0mV~2.0mV reading between the both leads of R 723 and R 722.

R-Channel: SVR 803 for 1.0mV~2.0mV reading between the both leads of R 823 and R 822.

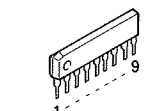




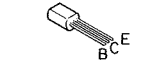


Lötseite
SOLDER SIDE
COTE DES SOUDURES
LATO SALDATURE

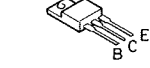
IC CONNECTION
 LA64585S ... IC701



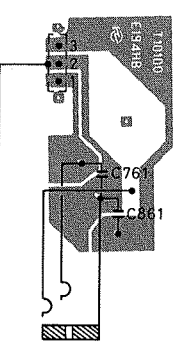
TRANSISTOR CONNECTION
 2SA1038S ... Q701.702.801.802
 2SA999F ... Q703.803
 2SA1038S ... Q704.804
 2SC2362F ... Q705.805
 2SC2274Y ... Q706.806
 2SA984E ... Q707.807



2SC3179Y ... Q708.808
 2SA1262Y ... Q709.809



HEADPHONE SOCKET PCB



HEADPHONE SOCKET